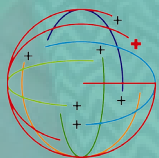


A photograph of a narrow, busy street in India. The street is filled with people walking and a motorcycle in the foreground. The walls of the buildings are covered with various signs and advertisements, including one for 'CHOUHARY COLLECTION' and another for 'PINKISH ENTERPRISES'. The overhead wires are a prominent feature of the scene.

Building Bridges to a Healthier India

A 5-Year Strategic Development Initiative to Improve Health Outcomes

Year One Report: March 2014-February 2015 • Report Issued May 2015



JOHNS HOPKINS
**CENTER FOR CLINICAL
GLOBAL HEALTH EDUCATION**

Center for Clinical Global Health Education

Johns Hopkins School of Medicine
600 North Wolfe Street | Phipps 540
Baltimore, MD 21287 | USA
(t) 410-614-0938 (f) 443-287-6440

Visit us at: main.ccghe.net



JOHNS HOPKINS
MEDICINE



Center for Clinical Global Health Education is Building Bridges to a Healthier India

With a population exceeding 1 billion, India is the second largest country in the world, and is on pace to eclipse China as the world's most populous country in the next decade. India currently ranks first in the world for cases of tuberculosis and diabetes, and third in the number of people infected with HIV. India also leads the world in maternal and neonatal deaths, and deaths attributed to cervical cancer. While the economy is growing and there have been advances in health outcomes, there are real challenges to enhancing, and even maintaining, progress in a growing population that leads the world in many health burdens.

India has resources to meet its health needs, but a shortage of health leaders and inadequate health policies hinder progress. That's why, for more than 2 decades, staff of the Center for Clinical Global Health Education have leveraged the mission of the Johns Hopkins School of Medicine to educate and mentor generations of Indian health leaders. In collaboration with local Indian organizations, we build and sustain the clinical and research leadership required to direct progress on India's health.

Our work has yielded tremendous advancements, but there is much to be done, and new challenges are emerging. In an effort to leverage more than 2 decades of proven success, in February 2014 we launched **Building Bridges to a Healthier India**, a strategic development initiative to engage partners who share our mission and support our goal of securing \$25 million over a 5-year period through 2018. This initiative supports work that:

- Empowers in-country leaders in global health—from medical students to senior faculty;
- Expands existing Indo-JHU partnerships in clinical care, health education, and research;
- Encourages Indian scientists to generate and lead innovative and transformative research projects to optimize health improvements; and
- Enhances clinical care, clinical training, medical education, and health research through development of novel e-learning and mobile health technologies and training programs.



The **Building Bridges** initiative diversifies support for the important work in these areas and reduces dependence on research grant-based funding in increasingly uncertain economic and political times. With partners pledging nearly \$6 million during the inaugural year of the campaign, we are off to a very strong start. We look forward to sustaining the momentum that improves health outcomes in India and helps to train the next generation of health research and education leaders.



Building Bridges to a Healthier India: Campaign Priorities

Our campaign is designed to ensure that improvements in India's health outcomes are sustained over time. The priority areas below comprise our vision for developing strategic programs and the cadre of highly qualified professionals who can sustain measurable results.

LEADERSHIP DEVELOPMENT

Endowment for Junior Faculty Leadership Training Program in India

This endowment ensures continued, long-term, sustainable support for the development of early-career scientists in India. Under the directorship of CCGHE's Dr. Bollinger, the Fogarty training program has provided in-country training to more than 2,000 Indian scientists and clinicians, and has provided short-term strategic and degreed public health training to more than 100 visiting Indian scientists at Johns Hopkins.

- 5-Year Fundraising Goal: \$5,000,000
- Funding Pledged in Year One: \$0

Senior Faculty Leadership Visiting Fellowship Program for Mid-level Indian Scientists

An endowment focusing on visiting scientists establishes a prestigious, competitive fellowship program for mid-level Indian scientists at Johns Hopkins University (JHU) in Baltimore, Maryland. Fellows will be selected from established Indian institutions, and they will spend 3-6 months at JHU linked with a senior faculty member at Johns Hopkins Medicine. The program provides specific training to support leadership development in health research and education.

- 5-Year Fundraising Goal: \$1,000,000
- Funding Pledged in Year One: \$0

Intra-professional International Student Global Health Leadership Program in India

Professional mentorships for 3-4 Indian students will be established each year under this program. Students will be selected from in-country medicine, nursing, and public health programs to work with Johns Hopkins medical students on solving strategic healthcare delivery challenges. Johns Hopkins leadership has committed resources to support participation of JHU medical students and faculty supervision. These funds establish this collaborative program by supporting Indian student participation.

- 5-Year Fundraising Goal: \$1,500,000
- Funding Pledged in Year One: \$0

STRATEGIC PROGRAMS

Endowment for Named Professorships and Programs in South Asian Health Studies

This endowment ensures that existing Indo-JHU health partnerships in clinical care, health education, and research receive continued and expanded support. CCGHE has identified the following specialties in which professorships would be established: Infectious Diseases, Child Health, Maternal Health, Chronic Diseases, and Surgery.

- 5-Year Fundraising Goal: \$10,000,000
- Funding Pledged in Year One: \$5,000,000



Endowment for Innovations within a New Indo-JHU Health Research Program

An endowment in this area establishes an annual awards program for innovative, high priority research efforts led by an Indian scientist in collaboration with Johns Hopkins faculty. The program ensures continued Indo-JHU partnerships that generate novel and transformative research efforts that propel health improvements in India, and that first rate research continues to expand in India.

- 5-Year Fundraising Goal: \$3,000,000
- Funding Pledged in Year One: \$0

Novel e-Learning Training Programs for Healthcare Providers and Researchers in India

CCGHE is a global leader in the development and use of e-learning technology that provides access to the very latest and highest quality information on a vast array of healthcare issues. This program supports the development, delivery, and evaluation of 2-3 e-learning courses each year, and provides for an Indo-CCGHE partnership to establish and maintain a repository of online courses specifically designed to meet the continuing education needs of healthcare providers in India.

- 5-Year Fundraising Goal: \$1,500,000
- Funding Pledged in Year One: \$135,000

Novel Mobile Health (mHealth) Training Program for Indian Health Educators and Researchers

Leveraging our expertise in mobile health technology and education, this program enables CCGHE and local Indian partners to develop a mobile health training program, and to provide in-country training to 100-125 Indian students, faculty, and policymakers each year. In so doing, the program builds local capacity to support clinical care, health education, and research in India.

- 5-Year Fundraising Goal: \$1,500,000
- Funding Pledged in Year One: \$ 50,000

DIRECTOR'S FUND

As health priorities in India expand and emerge, approaches are needed that allow CCGHE the flexibility to accommodate new or expanded areas of study. The Director's Fund affords fast-tracked staffing and programmatic agility needed to respond to urgent priorities and to sustain or expand ongoing program priorities that address those needs.

- 5-Year Fundraising Goal: \$1,500,000
- Funding Pledged in Year One: \$ 344,547

Campaign Activities and Health Topics

PROJECT	INFECTIOUS DISEASES			NON-CO		
	Tuberculosis	HIV/AIDS	Other	Diabetes	Cancer	HPV
Gender Based Violence MOOC		•				•
HIV Management Conference in Mumbai	•	•			•	•
Global Health Intersession Course	•	•		•	•	•
Monthly Indian HIV Clinical Case Discussions	•	•			•	•
Monthly Tuberculosis Case Conference	•	•				
Mylan HIV Education	•	•			•	•
Weekly Tuberculosis Noon Conference	•	•		•		
Fogarty HIV-Tuberculosis Training Program	•	•				
Gilead Research and Education Program	•	•	•			
Ujala Scholars	•	•		•		
Wyncote Scholars	•	•				
Tuberculosis Among Healthcare Workers	•	•				
Optimizing Treatment to Improve TBM Outcomes in Children	•	•				
Latent Tuberculosis Screening in Pregnant Women in India	•	•				
Cohort for Tuberculosis Research by the Indo-US Medical Partnership (C-TRIUMPh)	•	•		•		
COMBIND Trial		•				
Assessing the Association of Indoor Air Pollution with Tuberculosis	•					
Burden and Risk Factors for Drug-Resistant Tuberculosis in Pune, India	•	•		•		
Shorter Treatment for Minimal Tuberculosis in Children	•					
Tuberculosis-Diabetes Cohort	•	•		•		
Epidemiology of HIV/AIDS and Associated Comorbidities in a Public Antiretroviral Treatment (ART) Clinic in Pune	•	•		•	•	•
Hair Concentrations of Anti-Tuberculosis Drugs Among HIV-Infected and Uninfected Children in India	•	•				
Bacterial Antimicrobial Resistance Patterns in Pune, India			•			

COMMUNICABLE DISEASES				OTHER				
Cardiovascular	Pulmonary	Gastrointestinal	Other	Maternal and Child Health	Environmental Health	Nutrition	Drug Resistance	Misc.
				•				
•	•	•		•		•	•	
•	•	•		•	•	•	•	
	•	•		•		•	•	
	•	•					•	
•	•	•		•		•	•	
	•	•		•		•	•	
	•				•		•	
•	•	•		•	•	•	•	
	•				•		•	
	•				•		•	
	•	•		•	•	•	•	
				•			•	
				•				
•	•	•		•	•	•	•	
				•		•		
	•			•	•			
	•			•	•	•	•	
				•				
	•			•	•	•	•	
•	•	•				•	•	
				•			•	

Activities and Health Topics *continued*

PROJECT	INFECTIOUS DISEASES			NON-CO		
	Tuberculosis	HIV/AIDS	Other	Diabetes	Cancer	HPV
Multicenter Study of Options for Second-Line Effective Combination Therapy (SELECT)		•				
REMEMBER, Reducing Early Mortality and Early Morbidity by Empiric Tuberculosis Treatment Regimens	•	•				
Protecting Households on Exposure to Newly Diagnosed Index Multidrug-Resistant Tuberculosis Patients (PHOENix MDR TB)	•	•				
Predictive Value of Tuberculosis-Symptom Screen in HIV-Infected and HIV-Uninfected Pregnant Women in Pune, India	•	•				
Diagnosis of Tuberculosis Infection and Th1 Immune Response in Pregnant Women in India	•	•				
Assessing the Association of Indoor Air Pollution with Tuberculosis in Adult Women	•					
Breastfeeding Version of the PROMISE Study (Promoting Maternal and Infant Survival Everywhere)		•				
Formula Feeding Version of the PROMISE Study (Promoting Maternal and Infant Survival Everywhere)		•				
Impact of Diabetes on Tuberculosis Treatment Outcomes	•			•		
TREAT Asia Multi-Drug Resistant Tuberculosis Database	•					
Residual Respiratory Impairment Following Pulmonary Tuberculosis	•					
mHealth Survey on Tuberculosis and Diabetes	•			•		
Screening for Gender Based Violence (GBV) and Feasibility and Acceptability of mHealth GBV Screening and Support Tools						
Bacterial Antimicrobial Resistance Patterns in Pune, India: Community Health-Seeking Behavior Among Patients Admitted with Acute Febrile Illness			•			
Bacterial Antimicrobial Resistance Patterns in Pune, India: The Antibiotic Prescribing Practices, Knowledge and Views of Health-Care Providers in Pune, India						
Malnutrition and HIV Treatment Failure	•	•				
Phase I/II Dose-Finding Study of High-Dose Fluconazole Treatment in AIDS-Associated Cryptococcal Meningitis		•				
Hinduja-Hopkins Tuberculosis Research Partnership	•					
MiDOT (Directly Observed Therapy) mHealth Pilot Study	•					

COMMUNICABLE DISEASES				OTHER				
Cardiovascular	Pulmonary	Gastrointestinal	Other	Maternal and Child Health	Environmental Health	Nutrition	Drug Resistance	Misc.
								•
	•							
							•	
				•		•		
	•			•	•			
				•				
				•				
							•	
	•				•			
	•							
				•				
				•			•	
							•	
•				•		•		
								•
							•	

Activities and Health Topics *continued*

PROJECT	INFECTIOUS DISEASES			NON-CO		
	Tuberculosis	HIV/AIDS	Other	Diabetes	Cancer	HPV
Management Using the Latest Technologies in Resource-Limited Settings to Optimize Combination Therapy After Viral Failure (MULTI-OCTAVE)		•				
Prevalence Survey of Risk Factors for Tuberculosis in an HIV-Positive Population in Pune, India: Inclusion of Risk Factors for Non-Communicable Diseases (NCD)	•	•				
Study of Immune Reconstitution Inflammatory Syndrome (IRIS) for International Sites Initiating Highly Active Antiretroviral Therapy (HAART) in Infants and Children < 72 Months of Age	•	•				
Pharmacokinetic Properties of Antiretroviral Drugs During Pregnancy		•				
Trial of the Pharmacokinetics, Tolerability, and Safety of Once-Weekly Rifapentine and Isoniazid in HIV-Infected and Uninfected Pregnant and Postpartum Women	•	•				
A Randomized, Phase II Trial to Compare an HPV Test-and-Treat Strategy to a Cytology-Based Strategy for Prevention of CIN 2+ in HIV-Infected Women		•			•	•
Phase III Clinical Trial of Ultra-Short-Course Rifapentine/Isoniazid for the Prevention of Active Tuberculosis in HIV-Infected Individuals with Latent Tuberculosis Infection	•	•				
Very Early Intensive Treatment of HIV-Infected Infants to Achieve HIV Remission: A Phase I/II Proof of Concept Study		•				
A Randomized, Phase 2b Study of a Double-Dose Lopinavir/Ritonavir-Based Antiretroviral Regimen with Rifampin-Based Tuberculosis Treatment Versus a Standard-Dose Lopinavir/Ritonavir-Based Antiretroviral Regimen with Rifabutin-Based Tuberculosis	•	•				
Dose-Finding and Pharmacogenetic Study of Efavirenz in HIV-Infected and HIV/TB Co-Infected Infants and Children ≥ 3 Months to < 36 Months of Age	•	•				
Phase IV Randomized Double-Blind Placebo-Controlled Trial to Evaluate the Safety of Immediate (Antepartum-Initiated) Versus Deferred (Postpartum-Initiated) Isoniazid Preventive Therapy Among HIV-Infected Women in High TB Incidence Settings	•	•				
A Phase I/II, Open-Label, Single Arm Study to Evaluate the Pharmacokinetics, Safety and Tolerability of Bedaquiline in Combination with Optimized Individualized Multidrug-Resistant Tuberculosis Therapy in HIV-Infected and Uninfected	•	•				

MMUNICABLE DISEASES				OTHER				
Cardiovascular	Pulmonary	Gastrointestinal	Other	Maternal and Child Health	Environmental Health	Nutrition	Drug Resistance	Misc.
							•	
				•				
				•			•	
	•			•			•	
				•				
	•						•	
	•			•				
	•						•	
				•			•	
	•			•			•	
	•						•	

Approach

The health topics our work in India addressed in the past year are highlighted on pages 5 through 10. The way in which we address these topics, through leadership development, research, patient care, and education, is unique and embodies the mission of the Johns Hopkins School of Medicine. We work to build a sustainable infrastructure of health leaders in resource-limited countries. We train and mentor clinicians and scientists to develop and direct the policies, science, and clinical practice required to affect positive health outcomes. Additionally, many past trainees from India are now internationally recognized leaders who run scientific programs and institutions, set health policy agendas, and are sought out for their contributions to the global scientific discourse.

During Year One of the **Building Bridges** campaign, two new programs supporting scholars in the U.S. and in India were established, and support was leveraged for the existing NIH-funded Fogarty Scholars program. These young clinicians and scientists are involved in research that addresses India's most pressing health issues.



Back: Ashlyn Sowell, JHSOM; Kelly Dooley, JHSOM; Jessica Elf, Ujala Scholar; Rupak Shivakoti, Ujala Scholar; Natasha Chida, Ujala Scholar; Akshay Gupte, Ujala Scholar; Jyoti Mathad, Ujala Scholar; Leslie Bernard, JHU. Front: Molly Bowen, CCGHE; Bob Bollinger, CCGHE; Kamla Gupta, The Ujala Foundation; Rajiv Gupta, The Ujala Foundation; Amita Gupta, CCGHE; Jane McKenzie-White, CCGHE

Ujala Scholars

The newly-established Ujala Scholars fund provides support for 7 young scientists. We are pleased to name the Ujala Scholars.

- **Natasha Chida, MD.** Post-doctoral Fellow of Infectious Diseases, Johns Hopkins Medicine
- **Jessica Elf, MPH.** PhD Candidate, Johns Hopkins Bloomberg School of Public Health
- **Akshay Gupte, MBBS, MPH.** PhD Candidate, Johns Hopkins Bloomberg School of Public Health
- **Nikhil Gupte, PhD.** Research Associate, Deputy Director, Byramjee Jeejeebhoy Medical College -JHU Clinical Trials Unit
- **Jyoti Mathad, MD, MPH.** Instructor of Medicine, Weill Cornell School of Medicine
- **Vidya Mave, MD, MPH.** Clinical Research Director, Byramjee Jeejeebhoy Medical College Clinical Trials Unit
- **Rupak Shivakoti, PhD.** Research Scientist, Johns Hopkins Center for Clinical Global Health Education

Wyncote Scholars

Year One of the **Building Bridges** campaign allowed for the establishment of Wyncote Scholars fund. This year's scholar, Maunank Shah, MD, Assistant Professor of Infectious Diseases at Johns Hopkins Medicine, is enhancing the reach of an innovative mobile health application for smartphones that provides video-based monitoring of tuberculosis (TB) treatment. Initially pilot-tested in Baltimore, Texas, and Australia, Dr. Shah is testing whether the app can be used to treat TB patients receiving care in limited-resource settings, such as Pune and Bangalore, India.



BJGMC-JHU Fogarty HIV-TB Training Program

The current Fogarty Program selects, recruits, trains, and mentors junior faculty members at Byramjee Jeejeebhoy Medical College (BJMC) in Pune, India. The faculty conduct clinical research on, and build their expertise around, HIV and TB. At the end of the program, a select group of trainees independently runs the final phases of research, ensuring that responsibility for the research transfers from Johns Hopkins to BJMC. We are pleased to name this year's Fogarty Program trainees:

- **Dr. Aarti Kinikar**, Associate Professor, Pediatrics
- **Dr. Anita Basavaraj**, Associate Professor, Medicine
- **Dr. Sangita Shelke**, Associate Professor, Preventive and Social Medicine
- **Dr. Geeta Pardeshi**, Associate Professor, Preventive and Social Medicine
- **Dr. Sunita Girish**, Associate Professor, Biochemistry
- **Dr. Chhaya Valvi**, Assistant Professor, Pediatrics
- **Dr. Vasudha Belgaumkar**, Associate Professor, Skin & VD
- **Dr. Shilpa Naik**, Associate Professor, OB/GYN
- **Dr. Amit Kale**, Associate Professor, Orthopedics
- **Dr. Rahul Lokhande**, Associate Professor, Chest
- **Dr. Smita Deshpande**, Associate Professor, Microbiology

Pictured Above

Aarti Kinikar, Fogarty Scholar; Vidya Mave; Andrea DeLuca; Jonathan Golub; Amita Gupta; Dileep Kadam; Nikhil Gupte; Anita Basavaraj, Fogarty Scholar; Bob Bollinger; Geeta Pardeshi, Fogarty Scholar; Sangita Shelke, Fogarty Scholar; Vasudha Belgaumker, Fogarty Scholar; Shilpa Naik, Fogarty Scholar; Chhaya Valvi, Fogarty Scholar; Smita Deshpande, Fogarty Scholar; Rahul Lokhande, Fogarty Scholar



Donor Support

We are indebted to the foundations, corporations, and individuals who generously supported the **Building Bridges to a Healthier India** initiative during year one of the campaign.

FOUNDATIONS

- The Gilead Foundation
- The Goradia Foundation
- The Ujala Foundation
- The Wyncote Foundation

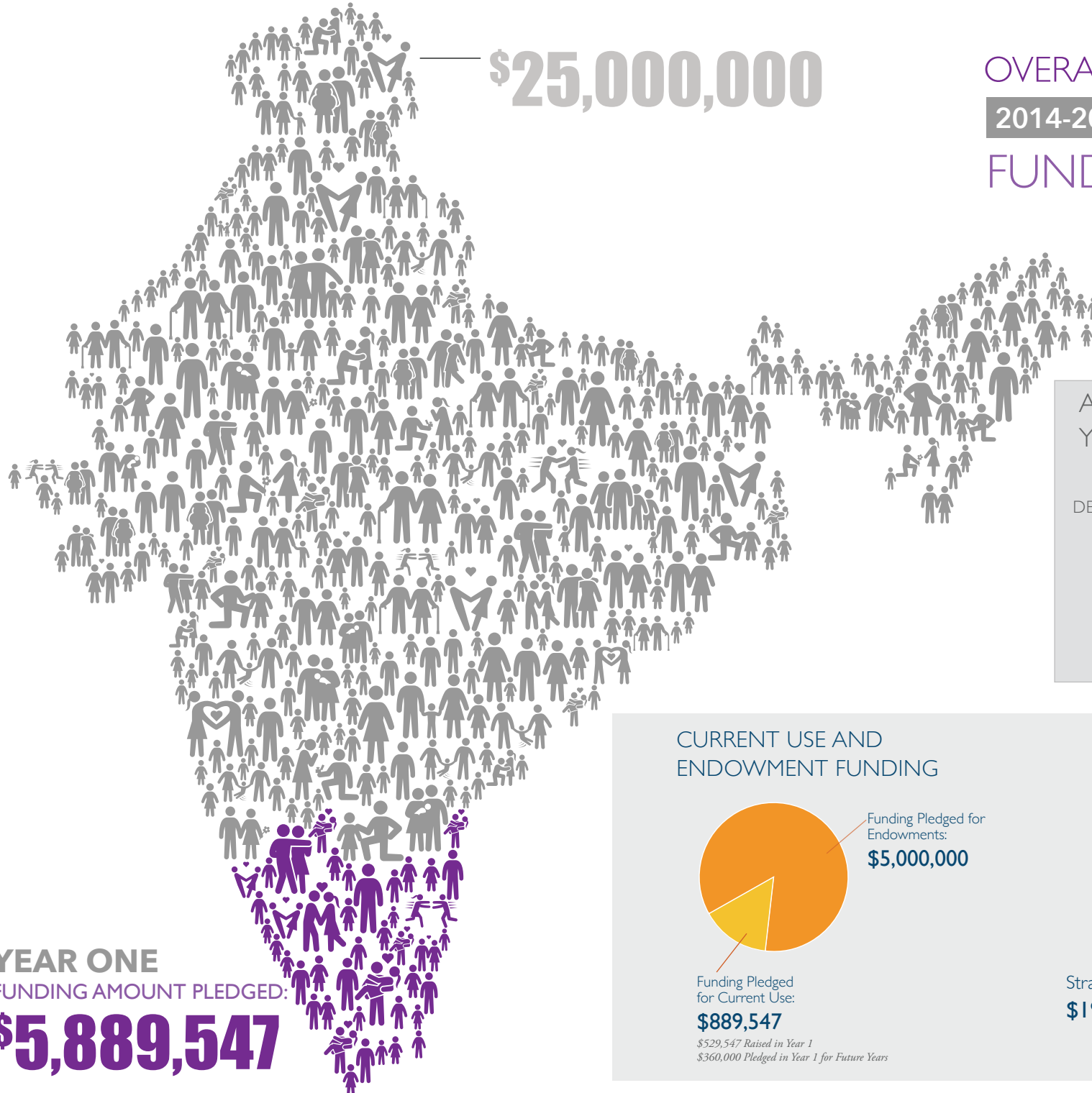
CORPORATE PARTNERS

- CTIS
- Hewlett-Packard

INDIVIDUALS

- Pierre Brondeau
- Steve Klinsky
- James Kaiser
- Jeffrey Pferd
- Thomas Pogge
- Richard Shipley
- Ralph Whitworth





— \$25,000,000

OVERALL CAMPAIGN

2014-2018

FUNDRAISING GOAL

ALLOCATIONS FOR YEAR ONE PLEDGES

LEADERSHIP
DEVELOPMENT

\$0

STRATEGIC
PROGRAMS

\$5,185,000

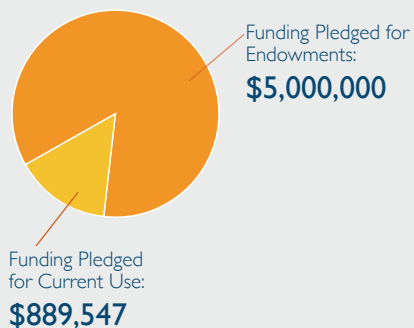
DIRECTORS
FUND

\$704,547

YEAR ONE
FUNDING AMOUNT PLEDGED:

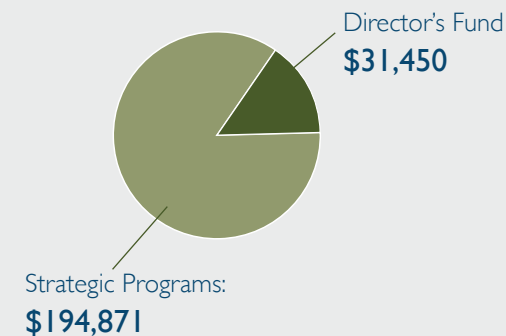
\$5,889,547

CURRENT USE AND ENDOWMENT FUNDING



*\$529,547 Raised in Year 1
\$360,000 Pledged in Year 1 for Future Years*

YEAR ONE CAMPAIGN SPENDING





Recent Accomplishments

- Renovated a healthcare clinic and research center in India where 5 studies on tuberculosis are now underway
- Established 2 scholars programs and a research and education program to mentor students and to offer global health professional development to early-career scientists
- Secured a funding pledge for the purchase of a healthcare van that will provide mobile care services in India, wherever they are needed
- Received 6 multiyear NIH, CDC, foundation grants to support TB, HIV, infectious diseases research, and 3 one-year grants to support research and education for our Indo-US program
- Provided fever diagnostic workups for more than 1,200 adults and children
- More than doubled the enrollment in our Fogarty Scholars leadership development program
- Mentored 12 students who received field placement in 3 hospitals in Pune, Chennai, and Mumbai
- Provided mentorship to students who received awards from the Infectious Disease Society of American and from the National Institutes of Health's Center for AIDS Research
- Provided HIV screenings for more than 6,000 pregnant women, and treated 180 HIV-positive pregnant women



- Mentored trainees who have submitted 7 grant applications
- Published 19 scholarly articles
- Developed a Gender-based Violence Massive Open Online Course (MOOC)
- Expanded our partnerships in India by signing MOUs with 3 additional hospitals and research centers
- Hosted 12 case discussions on tuberculosis and 12 on HIV, 52 noon conferences on tuberculosis, and 4 infectious disease Grand Rounds, all of which are available for review online
- Screened more than 1,500 people for tuberculosis
- Developed and provided instruction for a global health intercession course for Johns Hopkins medical students designed to promote knowledge and generate professional interest in work that benefits health outcomes in resource-limited countries



Johns Hopkins Center for Clinical Global Health Education

OUR MISSION

- Train, support, and empower healthcare providers and health researchers in resource-limited communities
- Demonstrate improved health outcomes in the communities served by our team and trainees



OUR FOCUS

CCGHE addresses the health priorities of the resource-limited countries in which we work. We establish partnerships with scientists and institutions, bringing the training and leadership expertise of Johns Hopkins, to help countries build and sustain their own educational programs, top-notch scientific research, in-country leadership efforts, and distance learning infrastructure. Responding to our partners' health priorities, our work builds:

Health Education. Our education programs, such as telemedicine conferences and e-learning courses, link providers with experts at Johns Hopkins and within our partner countries. We have provided training and education on developments in maternal and child health, diabetes, oral cancer, cervical cancer, vitamin deficiency, HIV management and treatment, STDs, tuberculosis, influenza, dengue, as well as in biostatistics and bioethics. Our HIV/AIDS telemedicine case conferences with India had more than 20,000 views last year.

Health Research. We advance scientific research by establishing and building capacity for internationally recognized clinical research centers in India through collaborations with in-country medical and scientific research organizations. We've published more than 200 peer-reviewed research studies, and more than 60% of them have an Indian scientist as lead author. Such efforts broaden the body of scholarly literature internationally, propel progress in health outcomes, and highlight the impact of a new generation of Indian health leaders.

Healthcare Capacity. We improve the health of people in the communities we serve by strengthening diagnostic, prevention, and care services. Our partnerships in Pune established 23 prenatal clinics that were the first to offer HIV testing and counseling. We have provided more than 260,000 HIV screenings and diagnostic and treatment services to 6,500 HIV-positive mothers, preventing more than 2,000 Indian infants from acquiring HIV. Using innovative mobile technologies, we support health services for patients anywhere they're needed—at home or in a hospital, in urban or rural communities.

Leadership Development. We have a proven track record of highly successful leadership development and mentorship opportunities that produce international health leaders. Our partnership with India has provided for leadership training of more than 100 Indian clinicians and scientists on the Johns Hopkins medical campus in Baltimore, Maryland—many of whom are now internationally recognized leaders in health policy, research, and education.



Join Our Effort to Sustain Health Progress In India

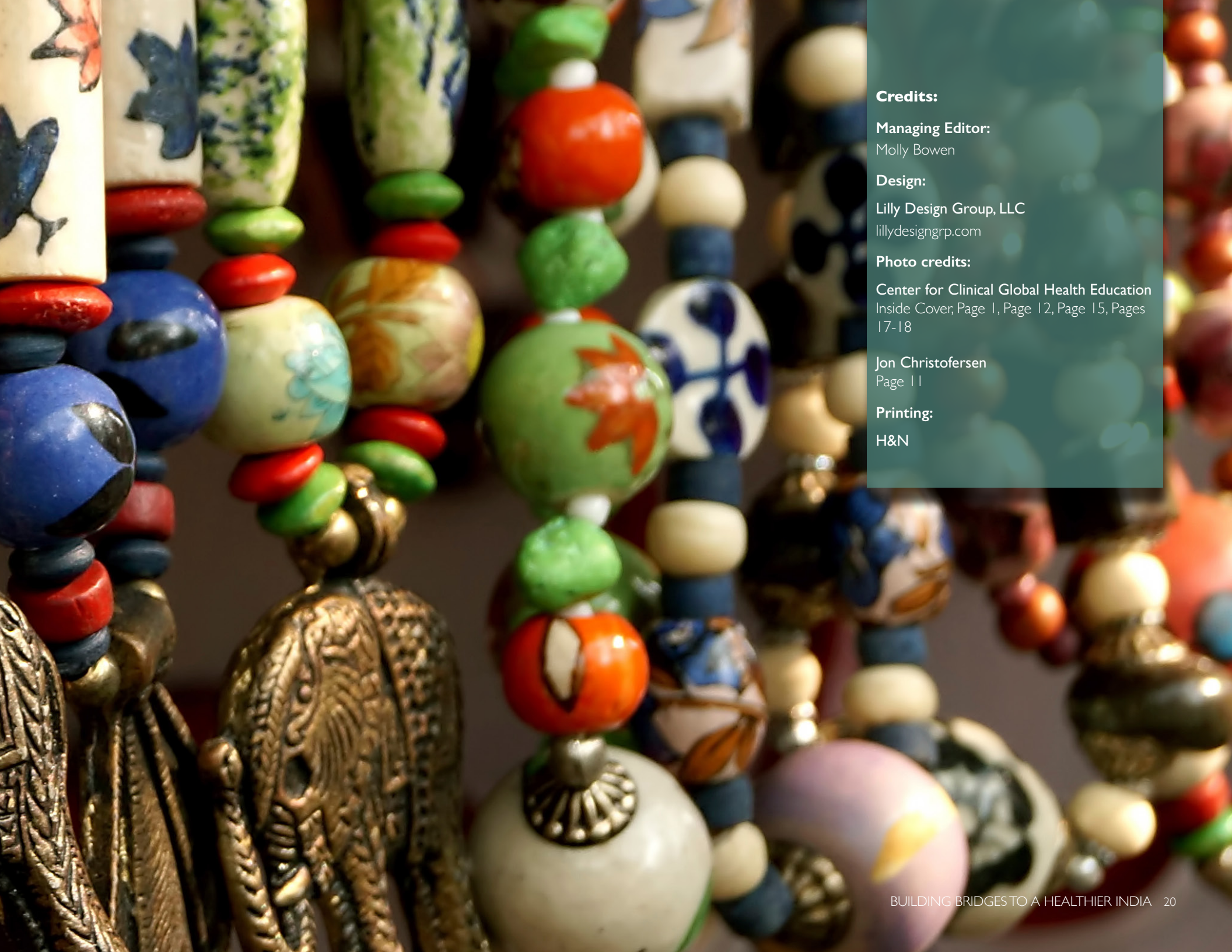
Our success relies on partnerships with individuals and organizations who share our commitment toward improving health outcomes. To find out more about CCGHE's work in India and how you can help, please contact us:

Center for Clinical Global Health Education

Johns Hopkins School of Medicine
600 North Wolfe Street | Phipps 540
Baltimore, MD 21287 | USA
(t) 410-614-0938 (f) 443-287-6440

Visit us at: main.ccghe.net

Or designate your support online for Building Bridges to a Healthier India
secure.jhu.edu/form/healthedu



Credits:

Managing Editor:

Molly Bowen

Design:

Lilly Design Group, LLC

lillydesigngrp.com

Photo credits:

Center for Clinical Global Health Education
Inside Cover, Page 1, Page 12, Page 15, Pages
17-18

Jon Christofersen

Page 11

Printing:

H&N



Center for Clinical Global Health Education

Johns Hopkins School of Medicine
600 North Wolfe Street | Phipps 540
Baltimore, MD 21287 | USA
(t) 410-614-0938 (f) 443-287-6440

Visit us at: main.ccghe.net

Or designate your support online for
Building Bridges to a Healthier India

secure.jhu.edu/form/healthedu